

Nr. inregistrare: luna anul
 124023 / 09
 1:5.000
 Copie conforma cu exemplarul din arhiva BIE
 Tarful: Județul Ialomița
 Referent: Tudor Vladimirescu
 L.S.



ROMANIA
 JUD. CONSTANȚA - COMUNA CORBU
 ANEXĂ LA CERTIFICATUL DE URBANISM
 Nr. 223 din 03.10.2019
 Arhitect șef,

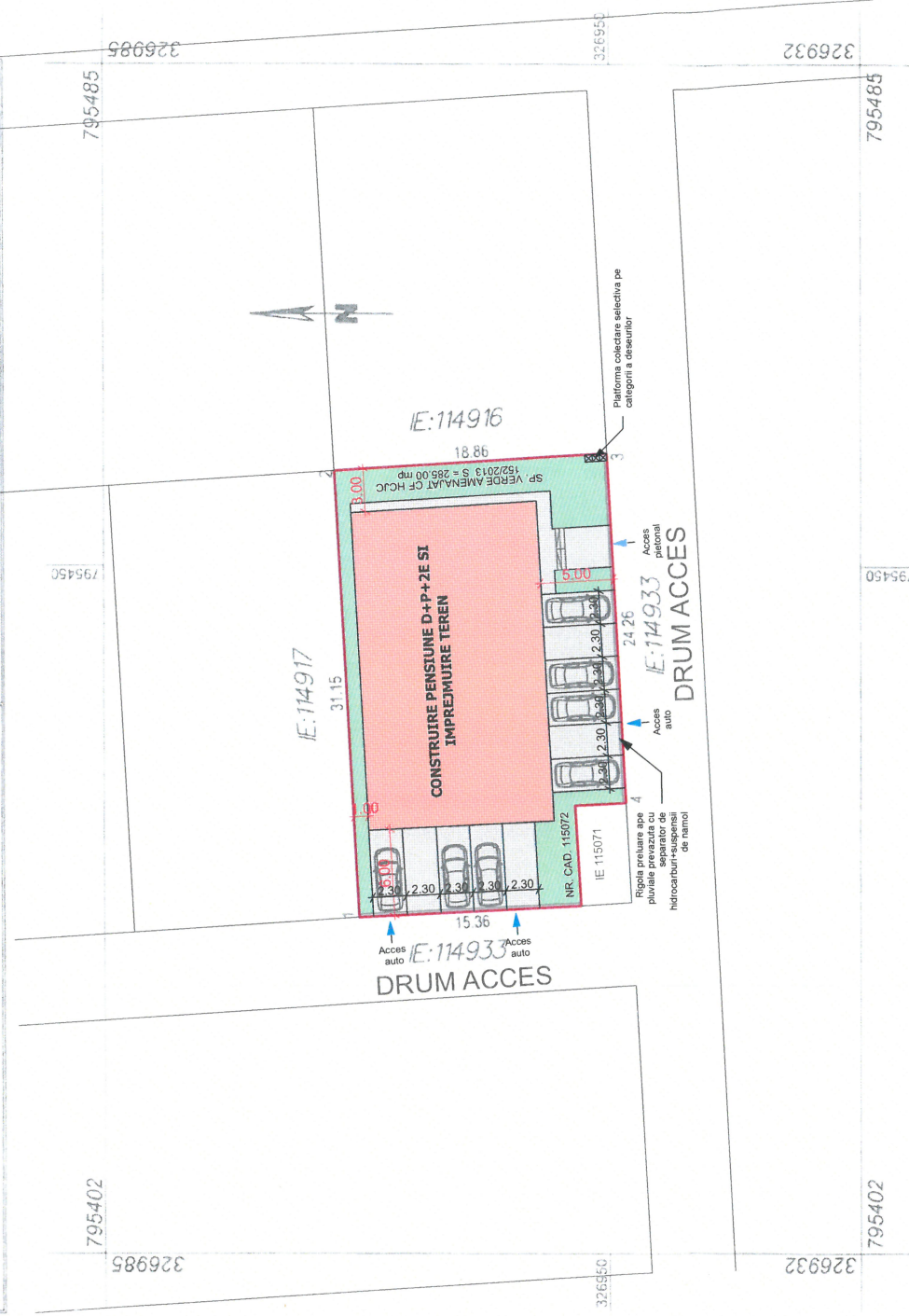
VERIFICATOR / VERIFIER EXPERT / EXPERT	NUME/NOME	SEMNATURA/SIGNATURE	CERINTA/ REQUIREMENT	REFERAT / EXPERTIZA NR. /DATA REFERENCE / EXPERTS REPORT NO. /DATE	Project Nr./ Project No.: 33/2019
ING. A. TERTESS	ING. E. SPIRIDON	ING. E. SPIRIDON	PLAN DE INCADRARE IN ZONA	NEVADA ESTIVAL S.R.L.	Faza/ Phase: C.U.
DESENAT/DRAWING	Arh. B. DATA	Arh. B. DATA	format plansa 43	Beneficiar/Beneficiary: NEVADA ESTIVAL S.R.L.	Pansa Nr./ Drawing No.: A01
PROTECTAT/DESIGNED	Arh. B. DATA	Arh. B. DATA		Titlu proiect/ Project title: CONSTRUIRE PENSIUNE D+P+2E SI IMPREJMUIRE TEREN	
SEF PROIECT/PROJECT MANAGER	Arh. B. DATA	Arh. B. DATA		JUD. CONSTANTA, COM. CORBU, TARLA 113, PARCELA A 575/13/2 + 575/14+LOT 1+575/15/1+575/15/2+575/15/3+575/15/4/2+575/15/5/2+575/15/1+575/15/11+575/15/12+575/15/13+575/15/14+575/15/15/1+575/15/16+575/15/17+575/15/18+575/15/19+575/15/20+575/15/21+575/15/22+575/15/23+575/15/24+575/15/25+575/15/26+575/15/27+575/15/28+575/15/29+575/15/30+575/15/31+575/15/32+575/15/33+575/15/34+575/15/35+575/15/36+575/15/37+575/15/38+575/15/39+575/15/40+575/15/41+575/15/42+575/15/43+575/15/44+575/15/45+575/15/46+575/15/47+575/15/48+575/15/49+575/15/50+575/15/51+575/15/52+575/15/53+575/15/54+575/15/55+575/15/56+575/15/57+575/15/58+575/15/59+575/15/60+575/15/61+575/15/62+575/15/63+575/15/64+575/15/65+575/15/66+575/15/67+575/15/68+575/15/69+575/15/70+575/15/71+575/15/72+575/15/73+575/15/74+575/15/75+575/15/76+575/15/77+575/15/78+575/15/79+575/15/80+575/15/81+575/15/82+575/15/83+575/15/84+575/15/85+575/15/86+575/15/87+575/15/88+575/15/89+575/15/90+575/15/91+575/15/92+575/15/93+575/15/94+575/15/95+575/15/96+575/15/97+575/15/98+575/15/99+575/15/100	
SPECIFICATIE/SPECIFICATION	NUME/NOME	SEMNATURA/SIGNATURE			
ORDINUT ARHITECTILOR DIN ROMANIA	ING. A. TERTESS	ING. A. TERTESS			
PROIECT UNIQQUE sri , J13/2116/2007 , CUI RO 21996612, tel 0729 043 359, 2010@proiectuniquero					
SEF PROIECT/PROJECT MANAGER	Arh. B. DATA	Arh. B. DATA			
PROTECTAT/DESIGNED	Arh. B. DATA	Arh. B. DATA			
DESENAT/DRAWING	Ing. E. SPIRIDON	Ing. E. SPIRIDON			
VERIFICATOR/VERIFIED	Ing. A. TERTESS	Ing. A. TERTESS			

PLAN DE AMPLASAMENT ȘI DELIMITARE A IMOBILULUI

Scara 1: 500

Nr. cadastral	Suprafața măsurată a imobilului (mp)	Adresa imobilului
115042	564	Loc. Corbu, Tarla 113, Parcela A 575/13/2+ A 575/14-Lot 1+A 575/14/1-A 575/15/2/2-A 575/15/3/2-A 575/15/4/2-A 575/15/5/2-A 575/16/1-A 575/17/1-A 575/18/1+A 575/14/2-A 575/15/2/1-A 575/15/3/1-A 575/15/4/1-A 575/15/5/1-A 575/16/2-A 575/17/2-A 575/18/2-Lot 1+Lot 2+Lot 3, Lot 38/2

Nr. Cartea Funciară	Unitatea Administrativ Teritorială (UAT)
	CORBUI



A. Date referitoare la teren	
Nr. parcelă	Categorie de folosință
I	A
Suprafața (mp)	
	564
Mențiuni	
Terenul este neîmprejmuit.	
Total	
564	
B. Date referitoare la construcții	
Cod	Destinația
	Suprafața construită la sol (mp)
Mențiuni	
-	
Total	
-	

Suprafața măsurată a imobilului = 564 mp
Suprafața din act = - mp

ROMÂNIA
JUD. CONSTANȚA - COMUNA CORBU

ANEXĂ LA
CERTIFICATUL DE URBANISM
Nr. 223 din 03.10.2019

Arhitect șef,
[Signature]

S. teren = 564.00 mp
S.c. existenta = 0.00 mp
S.d. existenta = 0.00 mp
S.c. propusa = 286.00 mp
S.d. propusa = 1015.20 mp
P.O.T. existent = 0.00%
P.O.T. propus = 50.70%
C.U.T. existent = 0.00
C.U.T. propus = 1.80
Sp verde amenajat propus: 285.00 mp
Locuri de parcare: 11 locuri la nivelul solului



uniQue

P B Q L E

PROIECT UNIC

VERIFICATOR / VERIFIER EXPERT / EXPERT	NUME/NOME	SEMNTURA/SIGNATURE	CERINTA / REQUIREMENT	REFERAT / EXPERTIZA NR. / DATA REFERENCE / EXPERTS REPORT NO. / DATE
	Arh. B. Daia	[Signature]		Beneficiar/Beneficiary: NEVADA ESTIVAL S.R.L.
	Arh. B. Daia	[Signature]		Titlu proiect/ Project title: CONSTRUIRE PENSIUNE D+P+2E SI ÎMPREJMUIRE TEREN
	Ing. E. Spiridon	[Signature]		JUD. CONSTANȚA, COM. CORBU, TARLA 113, PARCELA A 575/13/2 +A575/14/1-A 575/15/2/2-A 575/15/3/2-A 575/15/4/2-A 575/15/5/2-A 575/16/1-A 575/17/1-A 575/18/1+A 575/14/2-A 575/15/2/1-A 575/15/3/1-A 575/15/4/1-A 575/15/5/1-A 575/16/2-A 575/17/2-A 575/18/2-Lot 1-Lot 2-Lot 3, Lot 38/2
	Ing. A. Tertess	[Signature]		Titlu plansa/ Drawing title: PLAN DE SITUATIE

format plansa A3